

Solid Cemented Carbide rods - sizes available

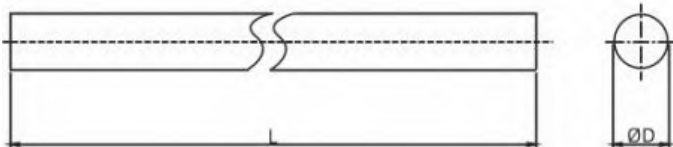
SBC-10.6, SBC-10.7, SBC-12.4 (metric)				
Dia (mm)	L (mm)		Dia (mm)	L (mm)
2	310/330	→	22	310/330
3	310/330		23	310/330
4	310/330		24	310/330
5	310/330		25	310/330
6	310/330		26	310/330
7	310/330		27	310/330
8	310/330		28	310/330
9	310/330		29	310/330
10	310/330		30	310/330
11	310/330		31	310/330
12	310/330		32	310/330
13	310/330		33	310/330
14	310/330		34	310/330
15	310/330		35	310/330
16	310/330		36	310/330
17	310/330		37	310/330
18	310/330		38	310/330
19	310/330		39	310/330
20	310/330		40	310/330
21	310/330			

SBC-10.6, SBC-10.7, SBC-12.4 (English)				
Dia (in.)	L (in.)		Dia (in.)	L (in.)
0.1250	13 1/8	→	0.4063	12 1/8
0.1406	13 1/8		0.4219	12 1/8
0.1563	13 1/8		0.4375	12 1/8
0.1719	13 1/8		0.4531	12 1/8
0.1875	13 1/8		0.4688	12 1/8
0.2031	13 1/8		0.4844	12 1/8
0.2188	13 1/8		0.5000	12 1/8
0.2344	13 1/8		0.5313	12 1/8
0.2500	13 1/8		0.5625	12 1/8
0.2813	12 1/8		0.6250	12 1/8
0.2969	12 1/8		0.6875	12 1/8
0.3125	12 1/8		0.7500	12 1/8
0.3281	12 1/8		0.8125	12 1/8
0.3438	12 1/8		0.8750	12 1/8
0.3594	12 1/8		0.9375	12 1/8
0.3750	12 1/8		1.0000	12 1/8
0.3906	12 1/8			

Product standards (metric)				
Unground Dia. (mm)		Ground Dia. (mm)		L(mm)
Range	Tol. (mm)	Range	Tol.	Tol.
2 to ≤ 3	+0.15, +0.30	2 to 40	H5/H6	0,+5
3.01 to ≤ 6	+0.30,+0.50			
6.01 to ≤ 12	+0.30,+0.60			
12.01 to ≤ 16	+0.30,+0.70			
16.01 to ≤ 42	+0.30,+0.80			

Product standards (English)				
Unground Dia. (in.)		Ground Dia. (in.)		L(in.)
Range	Tol. (in.)	Range	Tol.	Tol.
1/8 to ≤ 1/4	+0.012,+0.020	1/8 to ≤ 1	H5/H6	+1/8,+3/8
1/4 to ≤ 31/64	+0.012,+0.024			
31/64 to ≤ 5/8	+0.012,+0.028			
5/8 to ≤ 1	+0.012,+0.032			

Unground rod drawing and photo



Ground Rods with Chamfer - Available Sizes

SBC-10.6, SBC-10.7, SBC-12.4

OD (mm)	L (mm)	Chamfer (mm)	Chamfer angle
3	40	0.4	45°
3	50	0.4	45°
3	70	0.4	45°
3	100	0.4	45°
3	150	0.4	45°
4	40	0.4	45°
4	50	0.4	45°
4	75	0.4	45°
4	100	0.4	45°
4	150	0.4	45°
5	50	0.4	45°
5	55	0.5	45°
5	60	0.5	45°
5	70	0.5	45°
5	80	0.5	45°
5	100	0.5	45°
5	150	0.5	45°
6	50	0.5	45°
6	60	0.5	45°
6	75	0.5	45°
6	100	0.5	45°
6	150	0.5	45°
7	55	0.6	45°
7	60	0.6	45°
8	60	0.6	45°
8	75	0.6	45°

OD (mm)	L (mm)	Chamfer (mm)	Chamfer angle
8	80	0.6	45°
8	90	0.6	45°
8	100	0.6	45°
8	150	0.6	45°
10	70	0.6	45°
10	75	0.6	45°
10	90	0.6	45°
10	100	0.6	45°
10	125	0.6	45°
11	110	0.8	45°
12	75	0.8	45°
12	90	0.8	45°
12	100	0.8	45°
12	120	0.8	45°
14	75	0.8	45°
14	110	0.8	45°
14	125	0.8	45°
16	100	0.8	45°
16	125	0.8	45°
18	100	0.8	45°
18	150	0.8	45°
20	100	1.0	45°
20	120	1.0	45°
20	150	1.0	45°
25	100	1.0	45°
25	150	1.0	45°

SBC-10.6, SBC-10.7, SBC-12.4

		Chamfer Size	
OD (in.)	Tol.-0,+1/16	C	Tol
1/8	1 1/2	0.015	±0.004
1/8	2	0.015	±0.004
1/8	2 1/2	0.015	±0.004
1/8	3	0.015	±0.004
3/16	2	0.015	±0.004
3/16	3	0.015	±0.004
1/4	2	0.015	±0.004
1/4	2 1/2	0.015	±0.004
1/4	3	0.015	±0.004
1/4	4	0.015	±0.004
5/16	2 1/2	0.015	±0.004
3/8	2 1/2	0.015	±0.004
3/8	3	0.015	±0.004
1/2	2 1/2	0.031	±0.008
1/2	3	0.031	±0.008
1/2	4	0.031	±0.008
5/8	3 1/2	0.031	±0.008
3/4	4	0.031	±0.008
3/4	5	0.031	±0.008
1	4	0.031	±0.008

Product Standards

Ground Dia. (in.)		Angle of Chamfer
Range	Tol.	Tol.
0.125 to ≤ 1	h5/h6	45° ± 3°

Product standards

Ground Dia. (mm)		Chamfer	Angle of Chamfer	L (mm)
Range	Tol. (mm)	Range	Tol.	Tol.
3 to ≤ 25	h5/h6	±0.1	45° ± 3°	0,+1.0

